

Welcome to Camp!

Arrowbear Information Packet

Advanced Session

July 14-27, 2019



Thank you for choosing to make us a part of your summer adventures.

We can't wait to see you in the mountains!

Happy camping!

~The Arrowbear team~

Packet Contents:

- Pre-camp Checklist..... p. 1
- Arrival and Departure Information..... p. 1
- Directions to Camp..... p. 1
- Tuition Balance and Scholarship Information..... p. 2
- Medication Information..... p. 2
- General Camp Information Covering..... p. 2-3
 - communication policies
 - photos and group roster (the 'note')
 - snack bar and camp store
 - sleeping arrangements
 - visiting policies
- Packing List..... p. 4

Information at a glance:

- Camp office phone: 909-867-2782
- Larke's cell phone: 562-225-7766
- July 8th: session balance and health form due
- July 14th: Arrival- check email body for specific arrival time
- July 27th: Pick up day-5pm concert
- Camp's mailing address: PO Box 180, Running Springs, CA 92382
- Camp's physical address 33500 Music Camp Rd., Arrowbear Ik, CA 92382

Pre Camp Checklist



- Balance paid- due in full by July 8th
- Packing list double checked
- Online Health Form completed
- Campers who attended a previous session- please check that your health information is current and musical questionnaire is up to date
- Medications properly labeled and ready to turn in

Arrival and Departure Information

First Day of Camp-July 14th

Due to limited parking, we assign arrival times based on enrollment date. Check the body of this email for your specific drop off time. If you arrive to camp early, please head back into town for a nice cup of joe or a yummy brunch at a local diner such as Blondie's Grille.

Last Day of Camp July 27th- Final Concert 5pm:

The final concert will be held at 5pm on campus. Guests may arrive anytime after 3:30pm to visit and load luggage. Please do not arrive early as our program will still be in session and the front gate will be closed.

Parking



Final concert parking will be stacked, filling every available area of camp starting with the areas farthest from the entrance (think Hollywood Bowl style). Camp staff will be available to direct- look for the folks in the orange vests. If you wish to be closer to the exit, please arrive closer to concert time. Thank you in advance for being patient with our parking system.

Please, for our legal compliance and safety, no dogs are allowed on campus, except for registered service dogs.

Carpool

If you are interested in carpooling, please let us know and we will email your name, contact info, and location to everyone on the roster the week before camp begins.

Driving Directions to Camp

Physical address: 33500 Music Camp Rd, Arrowbear Lk, CA 92382

From I-210 in Highland, take HWY 330 towards Big Bear. After winding up the mountain road, continue through the small towns of Running Springs and Arrowbear.

Turn right at the second Arrowbear Drive (on the corner you will see a chain link fence and Blondie's Bar and Grille). If you reach a sign for Green Valley or Snow Valley Ski Resort, you have gone too far.

Stay to the left of the small pond and continue up Music Camp Road until you reach the camp. We have a large green and brown "Arrowbear Music Camp" sign at the entrance to the camp.

Follow signs to the check-in station.



Tuition Balance and Scholarship Information:

Tuition Fees

Your remaining balance must be paid by July 8th.

Scholarships

If you paid in full for camp and then received an Arrowbear Music Associates scholarship, your scholarship check will be handed to you during check-in. If a parent or guardian is not present to pick up the check we will mail it the following day.

If you received a scholarship from an organization other than AMA, please make sure camp has received all necessary paperwork.

Medications

All medications must be turned into the Camp Health Supervisor at check-in. This includes over the counter medications and is for legal compliance and camp safety. Medications **MUST** be in their original, labeled containers or they will not be administered. If you transfer pills into daily pill containers, make sure to provide the original prescription bottle.

General Camp information:

Communication with campers-

Old fashioned snail mail

Campers love to receive mail while at camp!

Please mail to-

Camper's Name

c/o Arrowbear Music Camp

PO Box 180

Running Springs, CA 92382

Any mail that arrives after the session ends will be returned to sender.



Alternatively, family and friends are welcome to leave mail with the camp office to be placed in the camper's mailbox on a specific day.

Messages

Messages received via email, text, or phone call will be placed in the campers' mail box daily.

Cell Phones

We highly, highly, highly recommend that you leave your cell phone and other electronic devices at home.

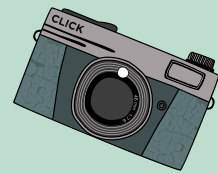
Phones really do distract from total involvement in the camp environment. Why not let this week be your chance to play music, make friends, enjoy the mountains, and learn as much as you can? Don't waste the money and time you put into being here by mentally being somewhere else. The camp does have an office phone for those who need to make an occasional quick call home.

One way emails through your online account

Log into your online account from our website and choose "additional Options" on the upper right hand side. Choose "Email a camper" from the drop down menu. Emails will be printed and placed in the campers' mailbox daily.

Daily Camp Photos:

Starting on Monday night (July 15th) we will upload session photos to your online account. Check back daily at approximately 7pm for new uploads. Log into your online account and choose "Additional Options" on the upper right hand side. Choose "Photo Gallery" from the drop down menu.



Commemorative Photo and Camp Roster (the 'note')

At the end of the session we will provide all the campers with a group photo and roster including contact information for all campers and staff. If you wish to have your contact information left off the roster, please let us know.

Arrowbear Store:

During free time we sell a small assortment of snacks and camp gear. All money must be turned in to the camp for safekeeping. A debit system will be used for purchases and the remaining balance will be returned on the last day. We accept cash, check or money order made out to Arrowbear Music Camp, or credit card through ultracamp. For a two week high school session we recommend \$30-\$100.

To add money online: Log into your online account and click "additional options" in the upper right hand side.

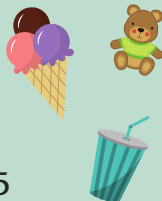
Prices-

Snacks/Soda \$1-\$4

T-shirts \$15

Sweatshirts \$25-\$30

Other camp gear \$3-\$25



The camp store will be open before and after the concert. At this time we will accept credit card payments.

Sleeping arrangements

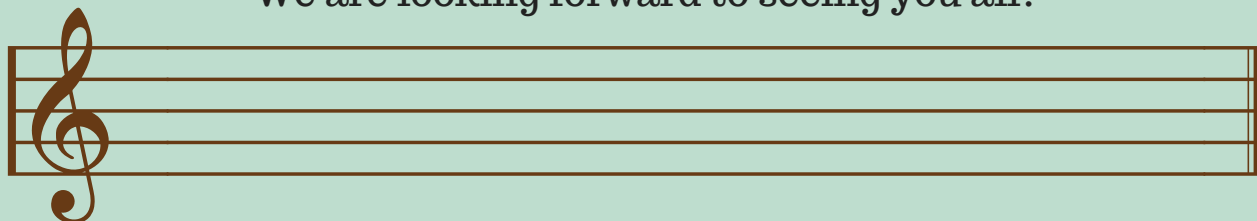
We cannot make sleeping arrangements in advance. There is plenty of space for friends to be near each other or hey- make a new friend. You never know, a new bunkmate could be a new friend for life. Bunks are chosen on a first come first serve basis.

Visitors

We discourage visiting as it detracts from the camp experience. Visits are only permitted with prior permission from the camp office. The camp day to day activities may vary from the posted schedule.

Thank you

We are looking forward to seeing you all!

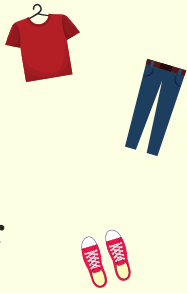




Packing List

Clothing

- Enough comfortable outdoor clothing for 13 days-
Example:
- Jeans/ long pants
- Shorts
- T-shirts/ tank tops
- Sweat shirt/ sweater
- Pajamas
- Socks
- Underwear
- Closed-toe shoes (hiking boots/ tennis shoes)
- Bag or collapsible hamper to hold dirty clothing
- Concert clothes: slacks, khakis or skirts; blouse, polo, or other collared shirt; dress



Music related

- Instrument & related items (mutes, reeds, extra strings, etc.)
- Pencils- soft lead
- Eraser
- If you plan on performing in our Musicale (recital) or Coconut Bear (talent show) bring any music you may need, including accompaniment
- Any additional instruments you play that you may like to use for free time or optional performance time



Misc.

- Reusable water bottle (or purchase one from the camp store)
- Flashlight or headlamp



Toiletries

- Towel and washcloth for shower
- Shower sandals (flip flops)
- Toothbrush, toothpaste, and floss
- Shampoo/conditioner and soap
- Sunscreen and chapstick
- Bug repellent
- Any other personal items you may need

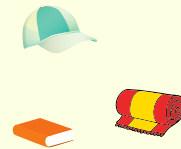


Bedding

- Warm Sleeping Bag- temps may drop below the 40's- please pack accordingly
- Pillow

Optional items

- Fitted sheet (to cover vinyl mattress)
- Blankets
- Swimsuit
- Pool towel
- Hat
- Sunglasses
- Hiking boots/ hiking gear
- Sandals
- Snack food in a labeled container
- Stamps and envelopes
- White clothing for tie-dying
- Camera
- Books/ magazines
- drawing supplies
- headphone/music player



Make sure to label all belongings with the camper's name. Aside from your instrument, please leave all valuables at home. Arrowbear Music Camp will not be held responsible for lost money or valuables.

